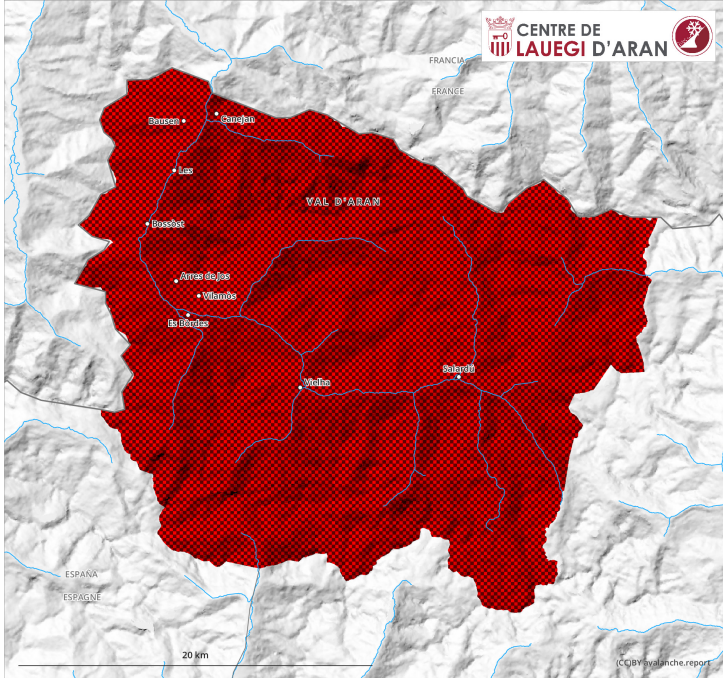
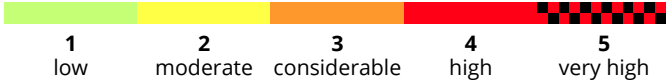
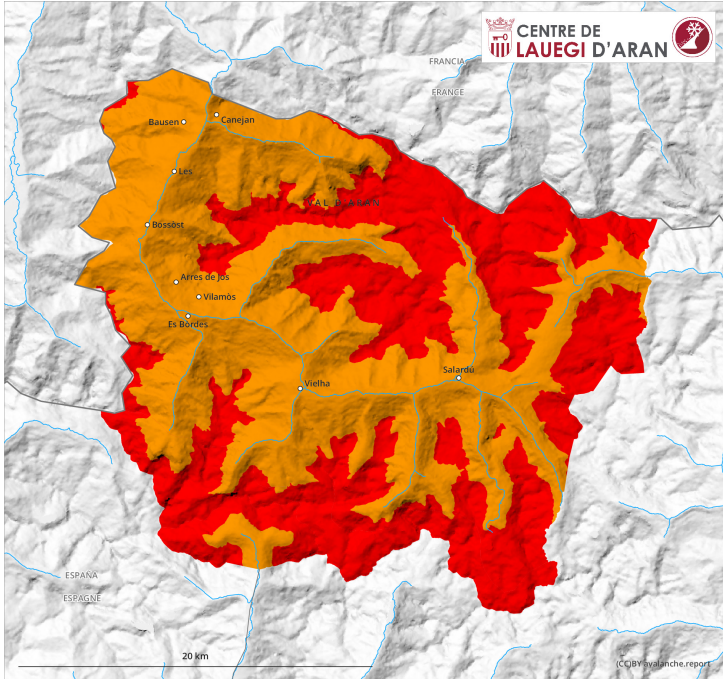


AM

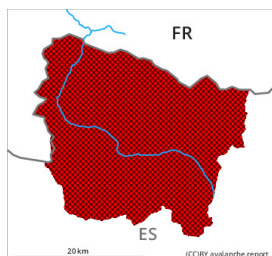


PM



Danger Level 5 - Very High

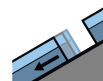
AM:



Tendency: Constant avalanche danger →
on Saturday 11 12 2021



New snow



Gliding snow



2000m ↓

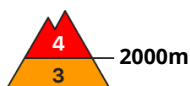
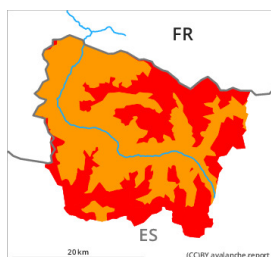


Wet snow



2100m ↓

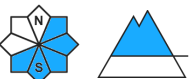
PM:



Tendency: Constant avalanche danger →
on Saturday 11 12 2021



Wind-drifted snow



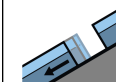
2000m ↑



New snow



2000m ↑



Gliding snow



2100m ↓

The large quantity of fresh snow and the widespread extensive wind slabs represent the main danger.

Early and late morning:

In all aspects large and, in isolated cases, very large dry and moist avalanches are to be expected as the snowfall level rises. Below approximately 2200 m medium-sized and, in many cases, large wet and gliding avalanches are to be expected. The avalanches can reach as far as the valley bottom even from moderately steep starting zones. Exposed parts of transportation routes can be endangered in some cases in all regions. The peak of avalanche activity will be reached during the second half of the night probably.

Midday and afternoon: In particular on east, southeast and south facing slopes the already large wind slabs will increase in size substantially until late in the night. The fresh wind slabs can be released easily or naturally and in all altitude zones. Mostly the avalanches in these loacations are large and very easily released. At elevated altitudes the avalanche prone locations are more prevalent and larger.

The conditions are very dangerous for ski touring, freeriding and snowshoe hiking outside marked and open pistes.

Snowpack

30 to 50 cm of snow fell today in all altitude zones. 40 to 60 cm of snow will fall until late morning above approximately 2000 m. This snow and the wind slabs that are forming during the snowfall will be deposited on a crust in all aspects and in all altitude zones. Up to intermediate altitudes rain will fall during the night.

Especially in places that are protected from the wind a lot of snow is lying for the time of year in all altitude zones. Above the tree line snow depths vary greatly, depending on the influence of the wind.

Tendency

Night: Temporary increase in danger of dry avalanches as a consequence of new snow and stormy weather.

Midday and afternoon: With the end of the intense snowfall, the natural activity of large and very large dry avalanches will appreciably increase.