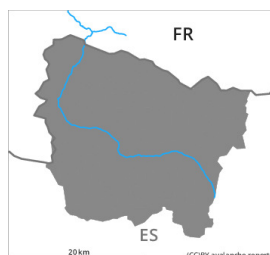




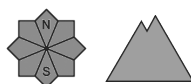
## Danger Level 4 - High



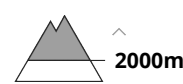
**Tendency: Decreasing avalanche danger**  
on Tuesday 11 01 2022



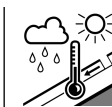
New snow



Wind-drifted  
snow



2000m



Wet snow



2000m

The large quantity of fresh snow as well as the extensive wind slabs represent the main danger. Medium-sized to large moist avalanches are to be expected as a consequence of the rain.

The new snow can be released easily or naturally in all aspects above approximately 2000 m. In many cases the avalanches in these locations are large.

The fresh and somewhat older wind slabs are in many cases quite large and can be released easily. The avalanche prone locations are to be found on east, south and west facing slopes above approximately 2000 m and adjacent to ridgelines and in pass areas.

In all aspects and below approximately 2000 m numerous medium-sized and, in many cases, large moist and wet avalanches are to be expected as the snowfall level rises. Moist avalanches can also reach dangerously large size and endanger transportation routes, including those situated at relatively low altitudes.

The conditions are very critical for ski touring, freeriding and snowshoe hiking.

### Snowpack

Over a wide area 30 to 50 cm of snow has fallen since Wednesday above approximately 1800 m. 50 to 60 cm of snow, and even more in some localities, will fall until late in the night above approximately 1900 m. The northerly wind will transport the fresh and old snow significantly. Up to 2200 m rain fell during the night.

### Tendency

Gradual decrease in danger of dry and moist avalanches as the precipitation eases.