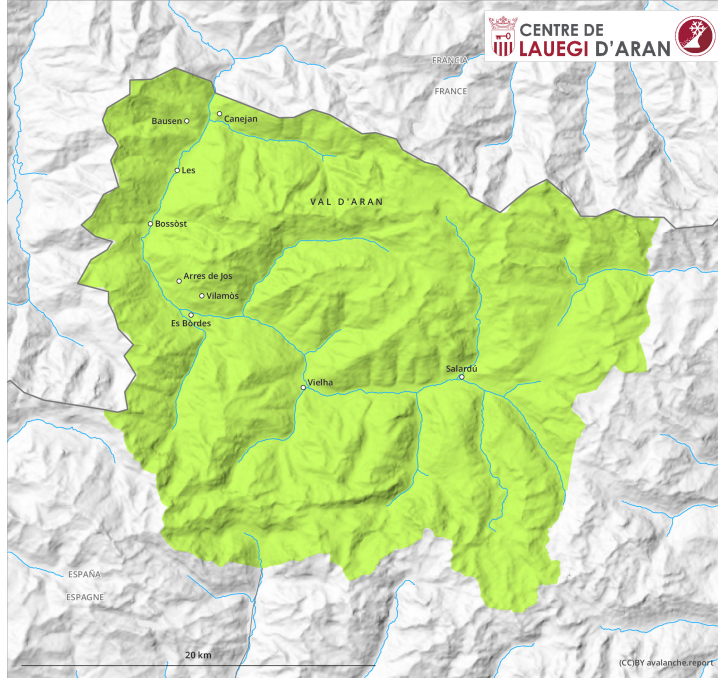
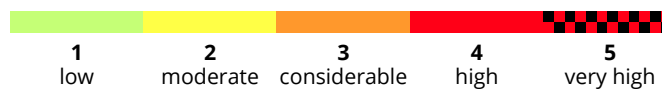
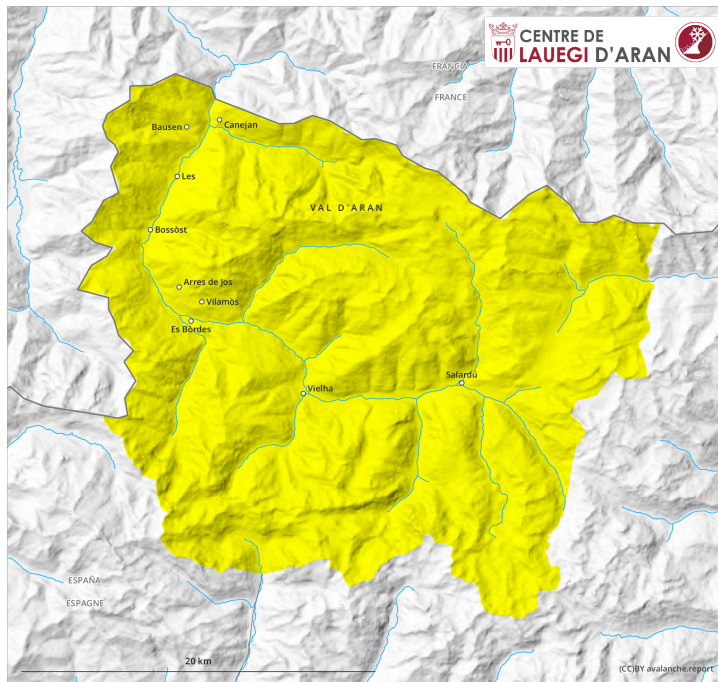


AM

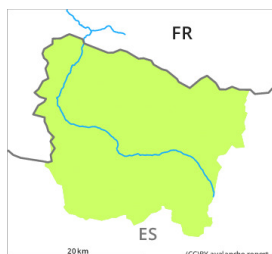


PM

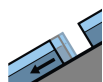


Danger Level 2 - Moderate

AM:



Tendency: Constant avalanche danger →
on Tuesday 19 04 2022



Gliding snow



Wet snow



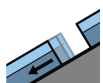
PM:



Tendency: Constant avalanche danger →
on Tuesday 19 04 2022



Wet snow



Gliding snow



Wet and gliding snow require caution.

As a consequence of warming during the day more wet and gliding avalanches are possible in the middle of the day.

The avalanche prone locations for gliding avalanches are to be found on very steep grassy slopes in all altitude zones. In very isolated cases they are large.

In addition in the middle of the day on east, south and west facing slopes, small and, in isolated cases, medium-sized wet snow slides and avalanches are to be expected. Moist avalanches can be released by people or triggered naturally. Areas with glide cracks are to be avoided.

Snowpack

The conditions are spring-like.

The surface of the snowpack is frozen, but not to a significant depth and will soften later than the day before.

The meteorological conditions caused a substantial weakening of the snowpack in all aspects. Naturally triggered avalanches confirm a dangerous avalanche situation on very steep slopes.

Tendency

Significant decrease in danger of wet and gliding avalanches as the temperature drops. Gradual increase in danger of dry avalanches as a consequence of the precipitation.