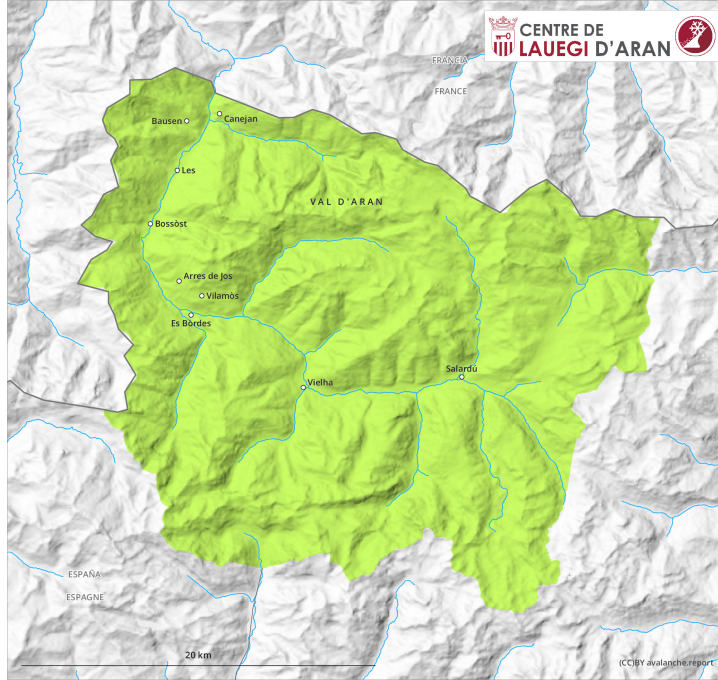
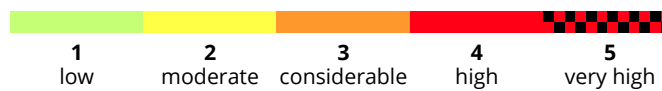
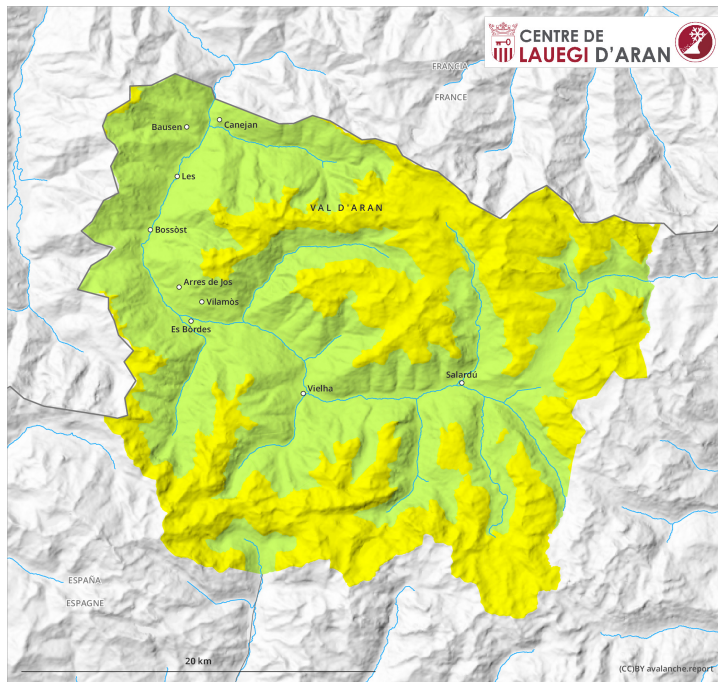


**AM**



**PM**



## Danger Level 2 - Moderate

**AM:**



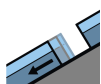
**Tendency: Increasing avalanche danger**  
on Wednesday 27 04 2022



Wind-drifted snow



Wet snow



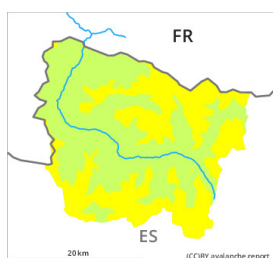
Gliding snow



**PM:**



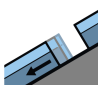
**Tendency: Increasing avalanche danger**  
on Wednesday 27 04 2022



Wet snow



Wind-drifted snow



Gliding snow



Until the early morning a generally favourable avalanche situation will prevail. Moist snow slides and avalanches as the day progresses. Old wind slabs at elevated altitudes.

As the temperature drops a favourable early-morning avalanche situation will prevail. As a consequence of warming during the day and solar radiation more frequent small and, in isolated cases, medium-sized moist snow slides and avalanches are possible below approximately 2200 m. The avalanche prone locations for moist avalanches are to be found in particular on extremely steep sunny slopes.

The no longer entirely fresh wind slabs of the weekend can be released by a single winter sport participant

in isolated cases in particular on very steep shady slopes and at elevated altitudes. The avalanche prone locations for dry avalanches are to be found in particular adjacent to ridgelines and in gullies and bowls and in the vicinity of peaks above approximately 2400 m.

Dry and moist avalanches can be released in the old snowpack by a single winter sport participant. This applies especially in all aspects and at high altitude. Sometimes the avalanches in these locations are medium-sized but in some cases easily released. In addition a latent danger of gliding avalanches exists. The current avalanche situation calls for meticulous route selection. Backcountry tours should be started and concluded early.

## Snowpack

The new snow of the weekend has settled to a large extent in all aspects. The sometimes strong wind has transported the new snow significantly. Outgoing longwave radiation during the night will be good. The surface of the snowpack will freeze to form a strong crust and will soften during the day. On shady slopes at intermediate and high altitudes there is still a very large amount of snow.

The Avalanche Warning Service currently has only a small amount of information that has been collected in the high Alpine regions, so that the avalanche danger should be investigated especially thoroughly in the relevant locality.

## Tendency

Wednesday: Further increase in danger of moist avalanches as a consequence of the rain.