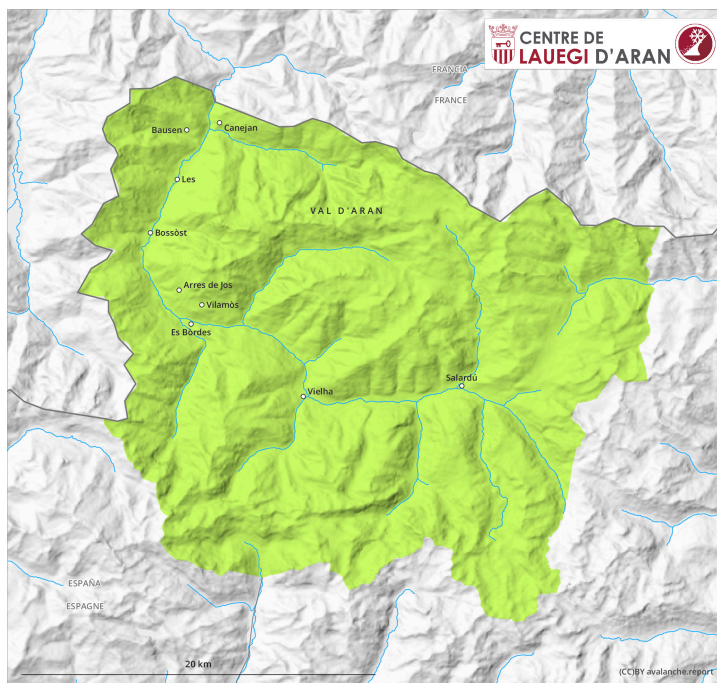
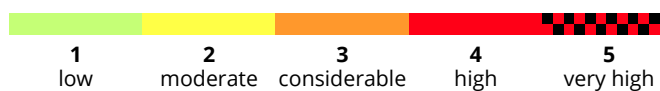
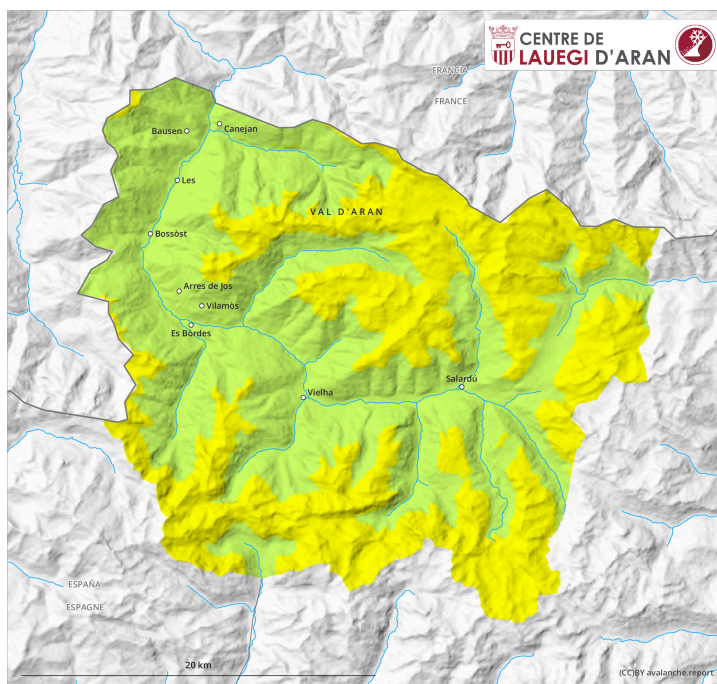


AM



PM



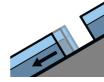
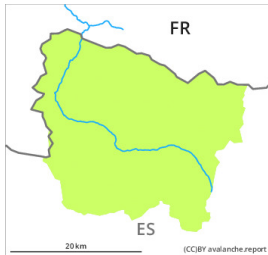
Danger Level 2 - Moderate

AM:



Tendency: Decreasing avalanche danger

on Monday 06 02 2023



Gliding snow



1800m

Snowpack stability: **fair**

Frequency: **few**

Avalanche size: **small**



Wet snow



2500m

2000m

Snowpack stability: **fair**

Frequency: **few**

Avalanche size: **small**



Wind slab



2300m

Snowpack stability: **fair**

Frequency: **few**

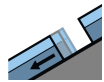
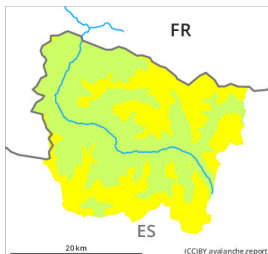
Avalanche size: **small**

PM:



Tendency: Decreasing avalanche danger

on Monday 06 02 2023



Gliding snow



1800m

Snowpack stability: **poor**

Frequency: **some**

Avalanche size: **medium**



Wet snow



2500m

2000m

Snowpack stability: **very poor**

Frequency: **some**

Avalanche size: **small**



Wind slab



2300m

Snowpack stability: **fair**

Frequency: **few**

Avalanche size: **small**

Gliding avalanches and moist snow slides are still possible. Dry avalanches are possible in isolated cases.

As a consequence of warming during the day and solar radiation more small moist snow slides are possible. The avalanche prone locations are to be found in particular on very steep sunny slopes at intermediate altitudes. On very steep grassy slopes more gliding avalanches are possible at any time, even medium-sized ones.

The old wind slabs can still be released in some cases especially on very steep north and east facing slopes and at elevated altitudes. The avalanches in these locations are rather small but can be released also by a single winter sport participant. The avalanche prone locations are to be found especially in gullies and

bowls, and behind abrupt changes in the terrain and adjacent to ridgelines. Weak layers in the old snowpack can still be released in very isolated cases on little-used, rather lightly snow-covered shady slopes.

Also extremely steep shady slopes: A certain danger of dry snow slides exists.

The current avalanche situation calls for meticulous route selection.

Snowpack

Several gliding avalanches and moist snow slides have been released in the last few days. Sunshine and high temperatures will give rise as the day progresses to slight moistening of the snowpack on very steep sunny slopes. The wind slabs of recent weeks have bonded quite well with the old snowpack. Field observations indicate a generally favourable avalanche situation on shady slopes.

Above the tree line there are 50 to 100 cm of snow, and even more in some localities. At intermediate and high altitudes snow depths vary greatly, depending on the influence of the wind.

Tendency

On Monday it will be cold. The danger of gliding avalanches and moist snow slides will decrease quickly. The sometimes strong wind will transport the loosely bonded old snow. In particular adjacent to ridgelines and in gullies and bowls as well as at elevated altitudes small wind slabs will form.