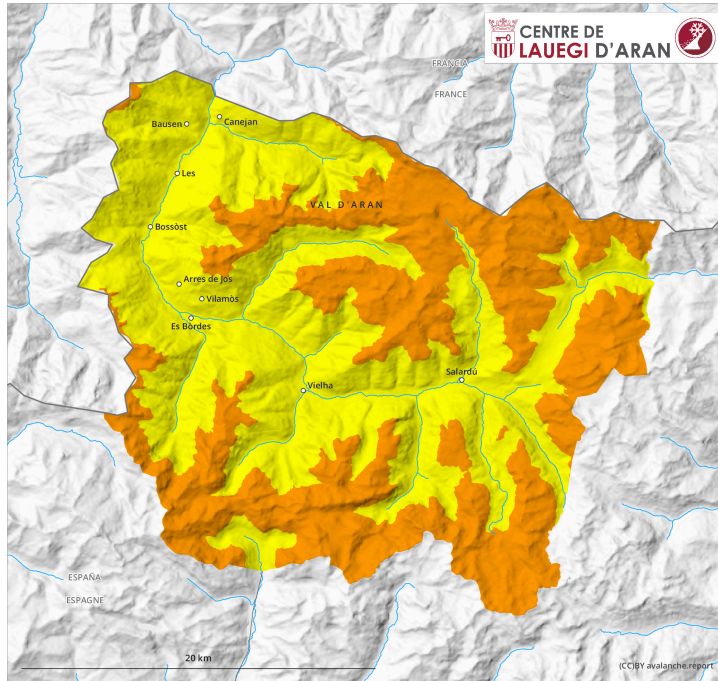
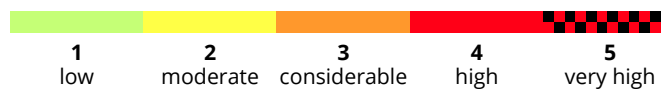
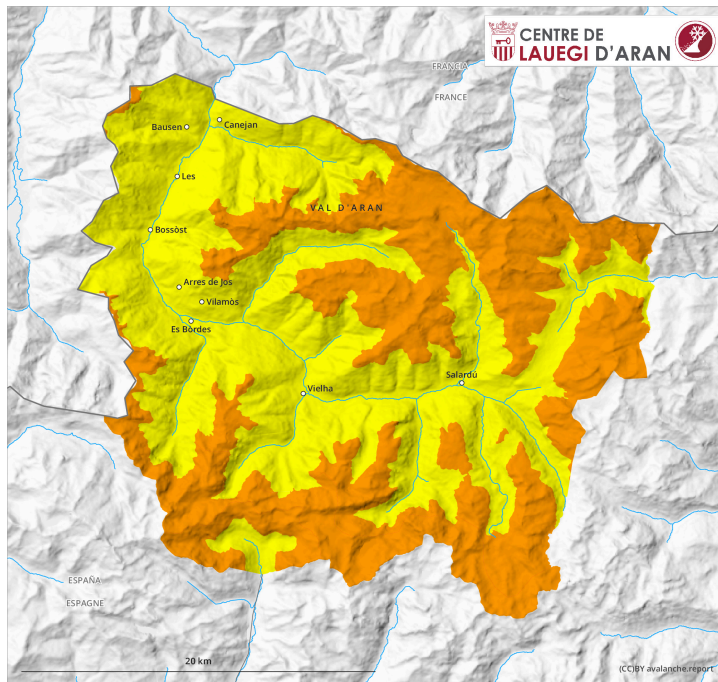


**AM**

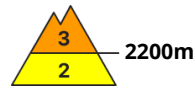
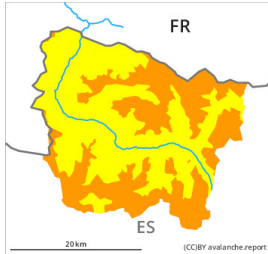


**PM**



## Danger Level 3 - Considerable

**AM:**



**Tendency: Decreasing avalanche danger**  
on Tuesday 04 04 2023



Wind slab



Snowpack stability: **very poor**

Frequency: **some**

Avalanche size: **medium**



New snow

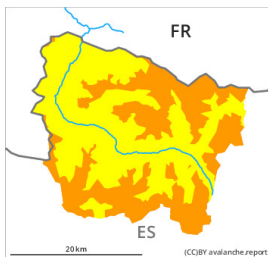


Snowpack stability: **poor**

Frequency: **some**

Avalanche size: **medium**

**PM:**



**Tendency: Decreasing avalanche danger**  
on Tuesday 04 04 2023



Wind slab



Snowpack stability: **very poor**

Frequency: **some**

Avalanche size: **medium**



Wet snow



Snowpack stability: **very poor**

Frequency: **some**

Avalanche size: **small**



New snow



Snowpack stability: **poor**

Frequency: **some**

Avalanche size: **small**

Fresh snow and large quantities of wind-drifted snow represent the main danger. Moist snow slides from the middle of the day.

As a consequence of new snow and a moderate to strong wind from northwesterly directions, sometimes deep wind slabs formed since Saturday in particular on northeast, east and south facing slopes. They are lying on a crust in particular on shady slopes and at high altitude. As a consequence of low temperatures, snowfall above approximately 1500 m and the occasionally strong northerly wind, the snow drift accumulations will increase in size by the middle of the day. The fresh snow and the wind slabs can be released easily, or, in isolated cases naturally and generally at intermediate and high altitudes. Sometimes the avalanches are medium-sized and in many cases easily released. The avalanche prone locations are to be found adjacent to ridgelines and in shady places that are protected from the wind. These avalanche prone locations are sometimes covered with new snow and are barely recognisable because of the poor visibility.

As a consequence of solar radiation more frequent moist snow slides are to be expected from midday,

even medium-sized ones.

The conditions are treacherous for ski touring, freeriding and snowshoe hiking in steep terrain. Apart from the danger of being buried, restraint should be exercised as well in view of the danger of avalanches sweeping people along and giving rise to falls.

## Snowpack

Up to 20 cm of snow, and even more in some localities, has fallen since Saturday above approximately 1500 m. 10 to 15 cm of snow, and even more in some localities, will fall until Monday. The sometimes strong wind will transport the new snow significantly. Fresh snow and large quantities of wind-drifted snow will be deposited on a crust in particular on wind-protected shady slopes and generally at high altitude. This snow and in particular the sometimes deep wind slabs are bonding poorly with the old snowpack in many places.

On shady slopes at high altitude there are 20 to 50 cm of snow, and even more in some localities. At low and intermediate altitudes from a snow sport perspective, in most cases insufficient snow is lying.

## Tendency

Tuesday: Gradual decrease in danger of dry avalanches as a consequence of the ceasing of precipitation. Significant increase in danger of moist avalanches as a consequence of solar radiation.