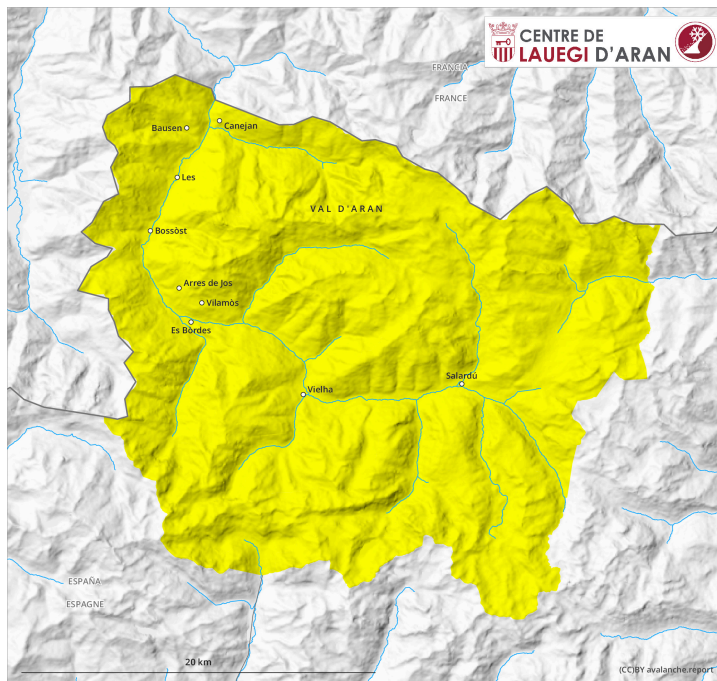
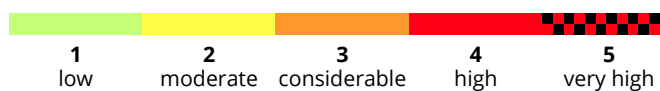
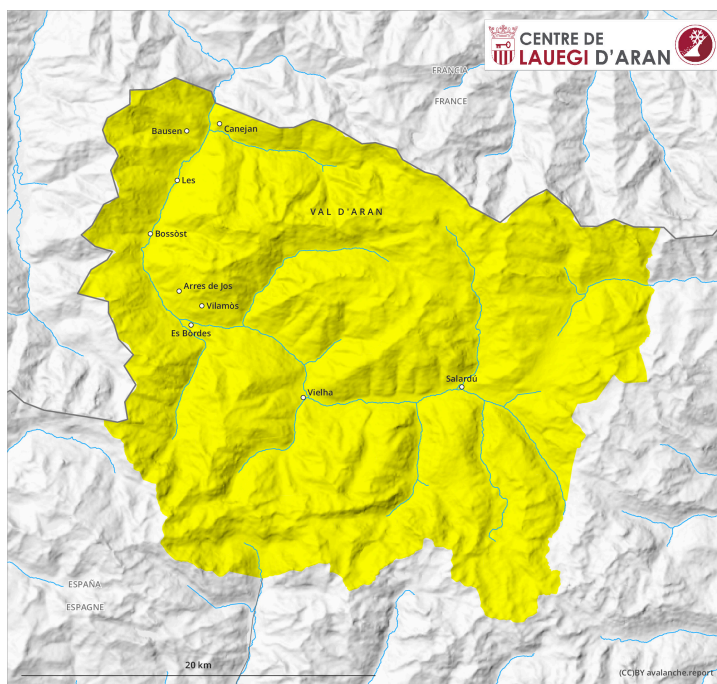


AM

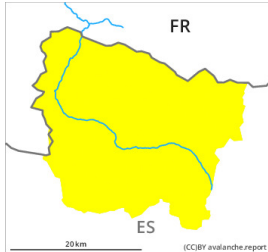


PM



Danger Level 2 - Moderate

AM:

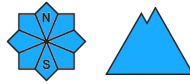


Tendency: Decreasing avalanche danger

on Saturday 17 02 2024



Wet snow



Snowpack stability: **very poor**

Frequency: **some**

Avalanche size: **small**



New snow

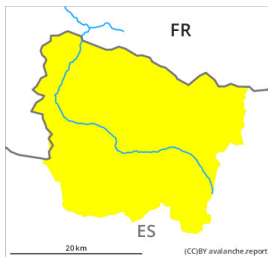


Snowpack stability: **poor**

Frequency: **few**

Avalanche size: **small**

PM:



Tendency: Decreasing avalanche danger

on Saturday 17 02 2024



New snow



Snowpack stability: **poor**

Frequency: **some**

Avalanche size: **small**



Wet snow



Snowpack stability: **very poor**

Frequency: **some**

Avalanche size: **small**

Early and late morning: Wet snow requires caution. Midday and afternoon: New snow above approximately 2000 m.

As a consequence of the precipitation moist and wet avalanches are to be expected as the day progresses, even medium-sized ones. The avalanche prone locations are to be found in particular on steep slopes below approximately 2500 m.

Midday and afternoon: As the snowfall level drops small dry avalanches are to be expected above approximately 2000 m. These can in some cases be released by people.

Snowpack

The surface of the snowpack is not frozen and will soften quickly.

Up to 2500 m rain will fall in the early morning over a wide area. Above approximately 2000 m snow will fall from midday. 10 to 15 cm of snow will fall until late in the night above approximately 2000 m.

Above approximately 2000 m there are 40 to 60 cm of snow, and even more in some localities. At low altitude from a snow sport perspective, insufficient snow is lying.

Tendency

Saturday: Gradual decrease in danger of moist avalanches as the temperature drops.