

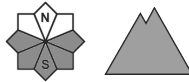
Danger Level 2 - Moderate



Tendency: Constant avalanche danger →
on Tuesday 17 December 2024



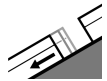
Wet snow



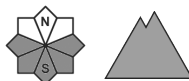
Snowpack stability: **very poor**

Frequency: **many**

Avalanche size: **small**



Gliding snow

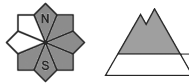


Frequency: **some**

Avalanche size: **medium**



Wind slab



^
Treeline

Snowpack stability: **poor**

Frequency: **some**

Avalanche size: **small**

Wet and gliding snow represent the main danger.

As a consequence of warming during the day and the solar radiation, the likelihood of moist avalanches being released will increase on steep sunny slopes in all altitude zones. In isolated cases Explanation: "these" may only stand for "these avalanches" are medium-sized.

Very steep grassy slopes: Gliding avalanches are likely to occur. Sometimes Explanation: "these" may only stand for "these avalanches" are medium-sized.

The more recent wind slabs can be released by a single winter sport participant. The avalanche prone locations are to be found especially on steep east, southeast and south facing slopes and adjacent to ridgelines and in pass areas. The avalanches are rather small.

Backcountry touring and other off-piste activities call for experience in the assessment of avalanche danger and caution.

Snowpack

Sunshine and high temperatures will give rise as the day progresses to increasing moistening of the snowpack especially on steep sunny slopes in high Alpine regions.

Above the tree line there are 50 to 80 cm of snow. In particular at high altitude snow depths vary greatly, depending on the influence of the wind.

Tendency

Tuesday: The danger of wet and gliding avalanches will persist.