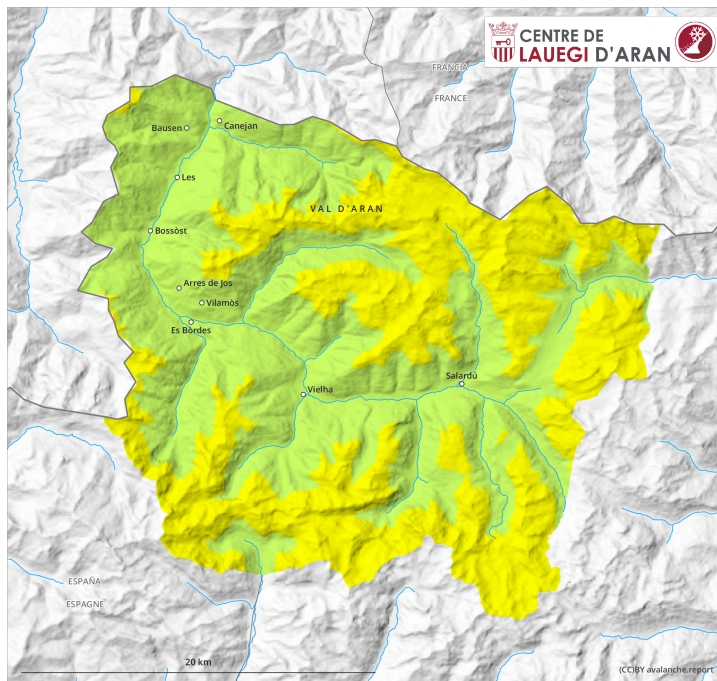
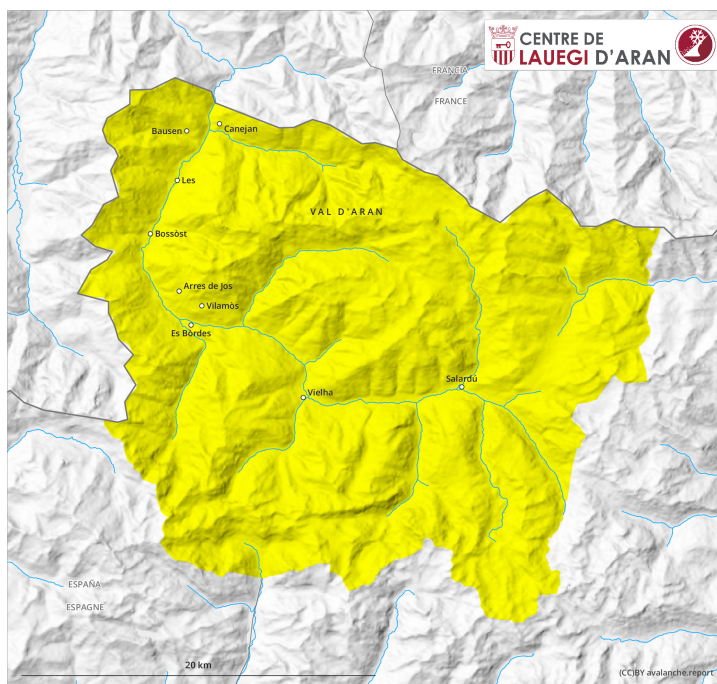




earlier

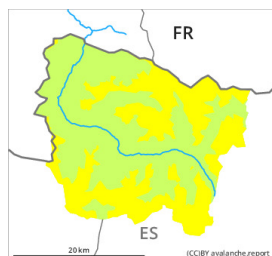


later



Danger Level 2 - Moderate

earlier



Tendency: Constant avalanche danger →
on Friday 10 April 2026



Persistent weak layer

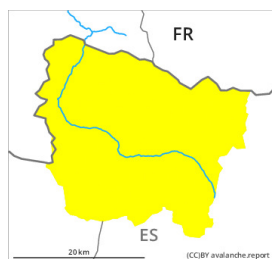


Snowpack stability: **poor**

Frequency: **few**

Avalanche size: **medium**

later



Tendency: Constant avalanche danger →
on Friday 10 April 2026



Wet snow



Snowpack stability: **very poor**

Frequency: **few**

Avalanche size: **medium**



Persistent weak layer



Snowpack stability: **poor**

Frequency: **few**

Avalanche size: **large**

Weakly bonded old snow at elevated altitudes. Wet and gliding avalanches as the day progresses.

Weak layers in the old snowpack can still be released in some places on very steep shady slopes. The avalanche prone locations are to be found in particular at the base of rock walls and behind abrupt changes in the terrain, and adjacent to ridgelines and in gullies and bowls above approximately 2400 m. They can in very isolated cases reach quite a large size. Sunny slopes: As a consequence of warming during the day and solar radiation more moist avalanches are possible as the day progresses, even medium-sized ones. Also shady slopes low and intermediate altitudes: As the penetration by moisture increases moist slab avalanches are possible, but they can reach medium size.

The current avalanche situation calls for meticulous route selection. Backcountry tours should be concluded by around midday.

Snowpack

In particular high altitudes wind-protected shady slopes: Distinct weak layers exist in the top section of the snowpack.



On Thursday it will be mostly sunny. Sunshine and high temperatures will give rise as the day progresses to increasing moistening of the snowpack.

At intermediate and high altitudes there is still a very large amount of snow. At high altitude snow depths vary greatly, depending on the influence of the wind.

Tendency

Friday: The conditions remain spring-like.