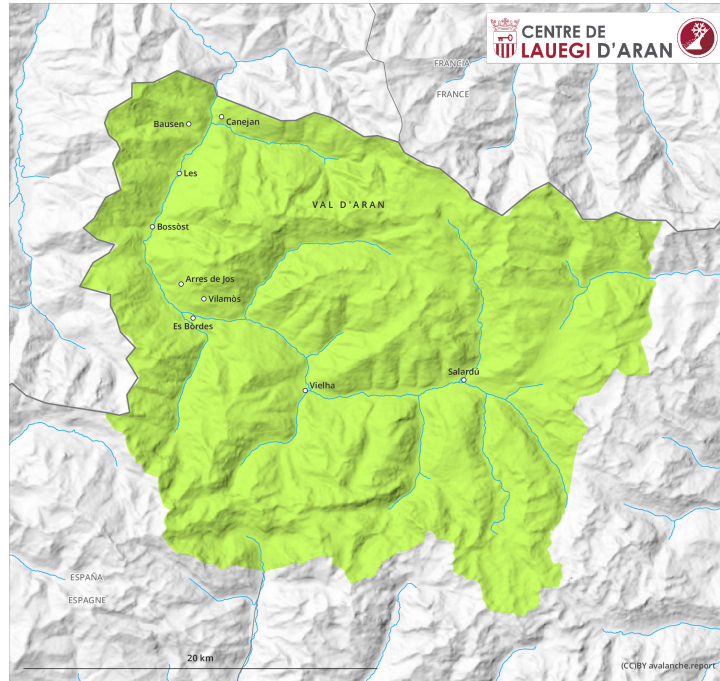
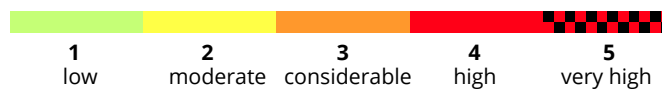
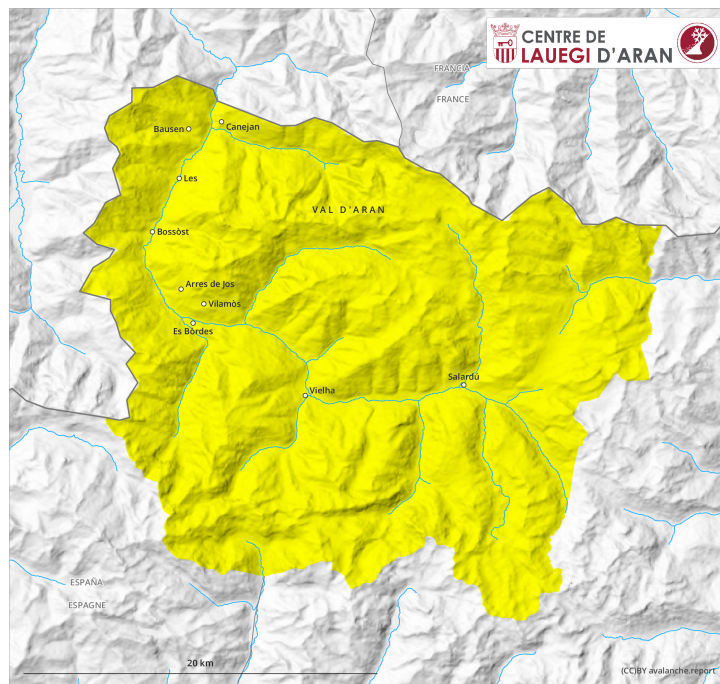




earlier

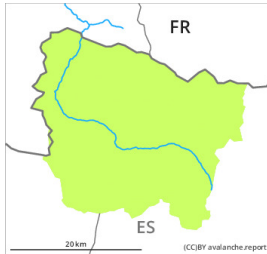


later



Danger Level 2 - Moderate

earlier



Tendency: Constant avalanche danger →
on Saturday 11 April 2026



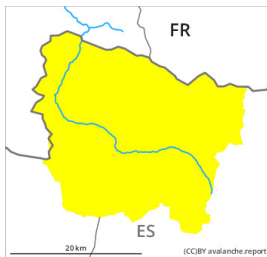
Persistent weak layer



2400m

Snowpack stability: **fair**
Frequency: **few**
Avalanche size: **medium**

later



Tendency: Constant avalanche danger →
on Saturday 11 April 2026



Wet snow



2400m



Persistent weak layer

Snowpack stability: **poor**
Frequency: **few**
Avalanche size: **medium**

Weakly bonded old snow at elevated altitudes. During the day: Moist snow slides and avalanches require caution.

Weak layers in the old snowpack can still be released in very isolated cases on very steep shady slopes. The avalanche prone locations are to be found in particular at the base of rock walls and behind abrupt changes in the terrain, and adjacent to ridgelines and in gullies and bowls above approximately 2400 m. They can in very isolated cases reach quite a large size. All aspects: As a consequence of warming during the day and solar radiation more moist snow slides and avalanches are possible as the day progresses, even medium-sized ones. Gliding avalanches can also occur.

The current avalanche situation calls for meticulous route selection. Backcountry tours should be concluded by around midday.

Snowpack

In particular high altitudes wind-protected shady slopes: Distinct weak layers exist in the top section of the snowpack. They are to recognise but unlikely to be released now.

On Friday it will be very warm. Sunshine and high temperatures will give rise as the day progresses to increasing moistening of the snowpack also on shady slopes in all altitude zones.



At intermediate and high altitudes there is still a very large amount of snow. At high altitude snow depths vary greatly, depending on the influence of the wind.

Tendency

Some rain will fall on Saturday. The danger of moist avalanches will not decrease for the time being.