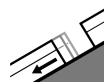




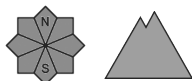
Danger Level 3 - Considerable



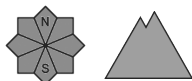
Tendency: Increasing avalanche danger
on Thursday 14 04 2022



Gliding snow



Wet snow



Wet and gliding snow require caution. On very steep shady slopes and in steep rocky terrain the avalanche situation is unfavourable.

As a consequence of the rain more wet and gliding avalanches are to be expected at any time. The avalanche prone locations for gliding avalanches are to be found in particular on very steep shady slopes below approximately 2400 m. In many cases the avalanches in these locations are large. Medium-sized and, in isolated cases, large natural avalanches are to be expected also in steep rocky terrain.

Snowpack

The conditions are spring-like. Up to 2400 m rain has fallen since the late morning. These meteorological conditions caused a substantial weakening of the snowpack in particular on very steep shady slopes. Naturally triggered avalanches confirm a dangerous avalanche situation. Since yesterday on shady slopes several large avalanches were observed.

Tendency

Thursday: Gradual decrease in danger of moist avalanches as a consequence of the ceasing of precipitation.