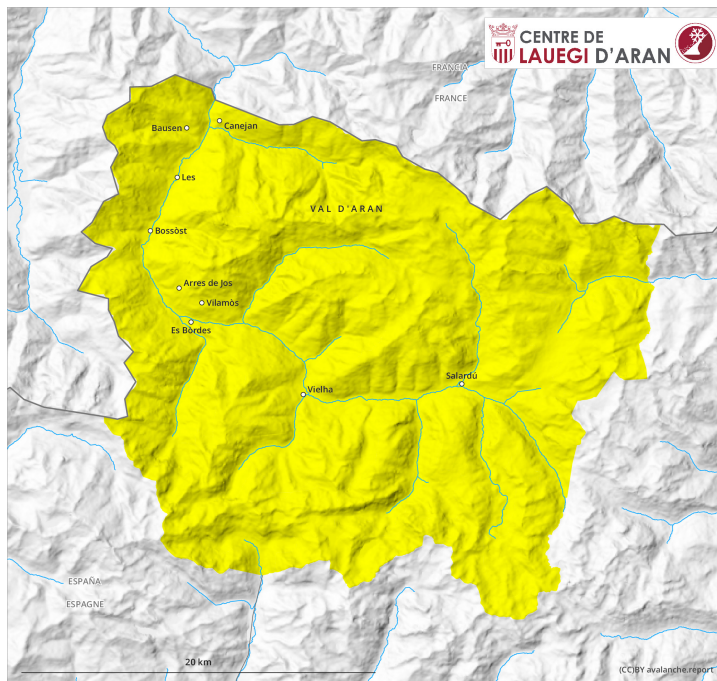
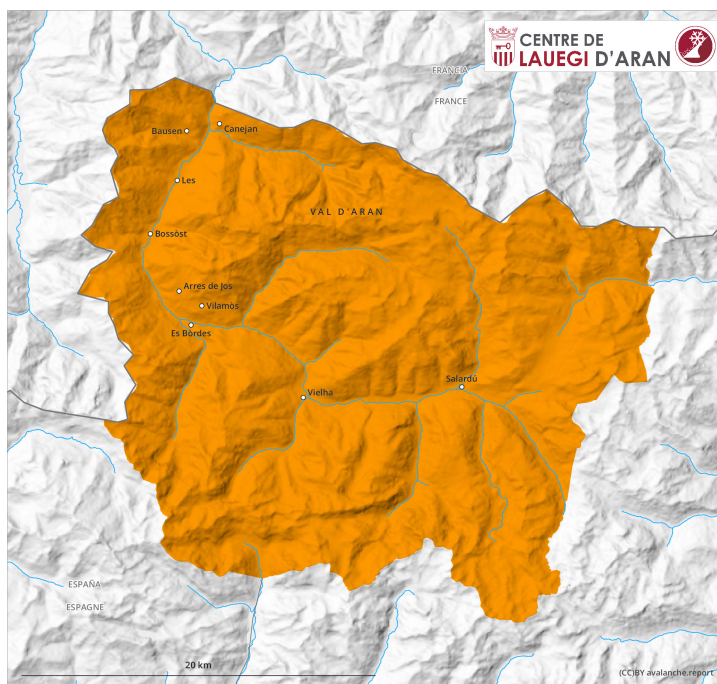
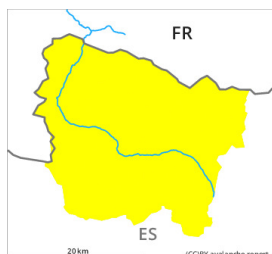


AM

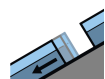


PM



Danger Level 3 - Considerable**AM:**
Tendency: Constant avalanche danger →
 on Friday 15 04 2022

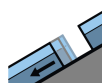

Wet snow



Gliding snow

**PM:**
Tendency: Constant avalanche danger →
 on Friday 15 04 2022


Wet snow



Gliding snow

**Wet and gliding snow represent the main danger.**

As a consequence of warming during the day and solar radiation more wet and gliding avalanches are possible as the day progresses.

The avalanche prone locations for gliding avalanches are to be found in particular on very steep shady slopes below approximately 2300 m and on grassy slopes in all altitude zones. In isolated cases the avalanches in these locations are large.

Small and medium-sized avalanches are possible also in steep rocky terrain. Moist avalanches can sometimes be released by people or triggered naturally. This applies in all aspects and in all altitude zones.

Snowpack

The conditions are spring-like.

The surface of the snowpack will cool hardly at all during the overcast night and will already soften in the late morning.

Up to 2400 m rain fell in the last two days. These meteorological conditions caused a substantial weakening of the snowpack in particular on very steep shady slopes. Naturally triggered avalanches confirm a dangerous avalanche situation.

Tendency

Friday: Hardly any decrease in danger of moist avalanches until the temperature drops.