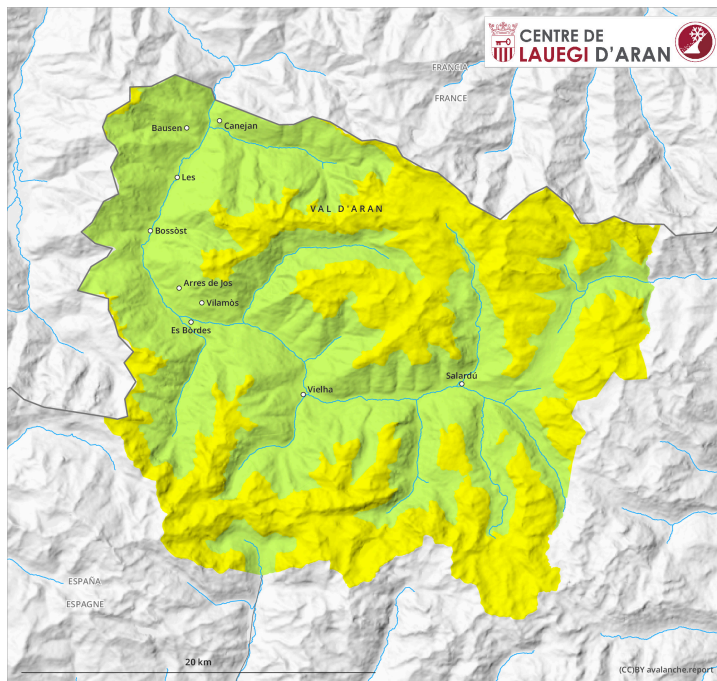
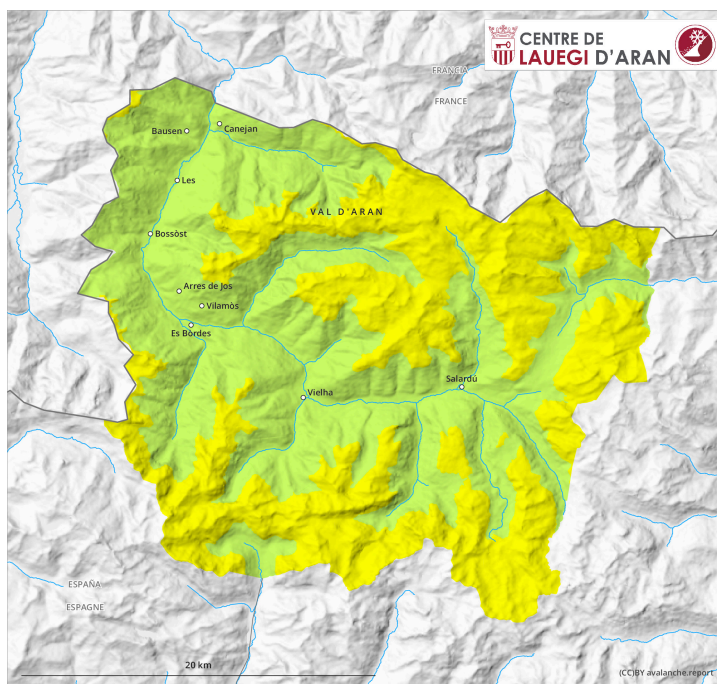


AM

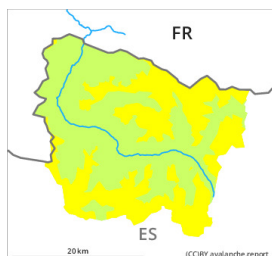


PM



Danger Level 2 - Moderate

AM:



Tendency: Constant avalanche danger →
on Thursday 16 03 2023



Wind slab



Snowpack stability: **poor**

Frequency: **some**

Avalanche size: **small**



Wet snow

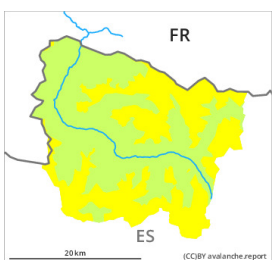


Snowpack stability: **fair**

Frequency: **few**

Avalanche size: **small**

PM:



Tendency: Constant avalanche danger →
on Thursday 16 03 2023



Wet snow



Snowpack stability: **poor**

Frequency: **some**

Avalanche size: **medium**



Wind slab



Snowpack stability: **poor**

Frequency: **few**

Avalanche size: **small**

Fresh wind slabs require caution. Moist snow slides and avalanches as the day progresses.

As a consequence of new snow and a sometimes strong northwesterly wind, mostly small wind slabs will form by Wednesday in particular adjacent to ridgelines and in pass areas. The fresh wind slabs will be deposited on a crust in all aspects above approximately 2000 m. They are mostly shallow but can in some cases be released easily. The avalanche prone locations are easy to recognise.

As a consequence of warming during the day and solar radiation more frequent moist snow slides and avalanches are possible as the day progresses, but they can reach medium size in isolated cases. The avalanche prone locations are to be found on very steep sunny slopes above approximately 2300 m and on wind-protected shady slopes below approximately 2300 m.

Even a small avalanche can sweep people along and give rise to falls. Backcountry tours and off-piste skiing should be concluded early. Off-piste activities call for meticulous route selection.

Snowpack

In particular in the north and in the east 5 to 10 cm of snow, and even more in some localities, will fall until the early morning. The sometimes strong wind will transport the new snow. The fresh wind slabs will form

adjacent to ridgelines on north, east and south facing slopes and generally at high altitudes. The surface of the snowpack will freeze to form a strong crust and will soften during the day. Wednesday: Sunshine and high temperatures will give rise as the day progresses to increasing moistening of the snowpack. At intermediate and high altitudes there are 30 to 60 cm of snow, and even more in some localities. In all regions less snow than usual is lying. On steep sunny slopes at low and intermediate altitudes no snow is lying.

Tendency

Thursday: Significant increase in danger of moist avalanches as a consequence of warming during the day and solar radiation. Significant decrease in danger of dry avalanches.