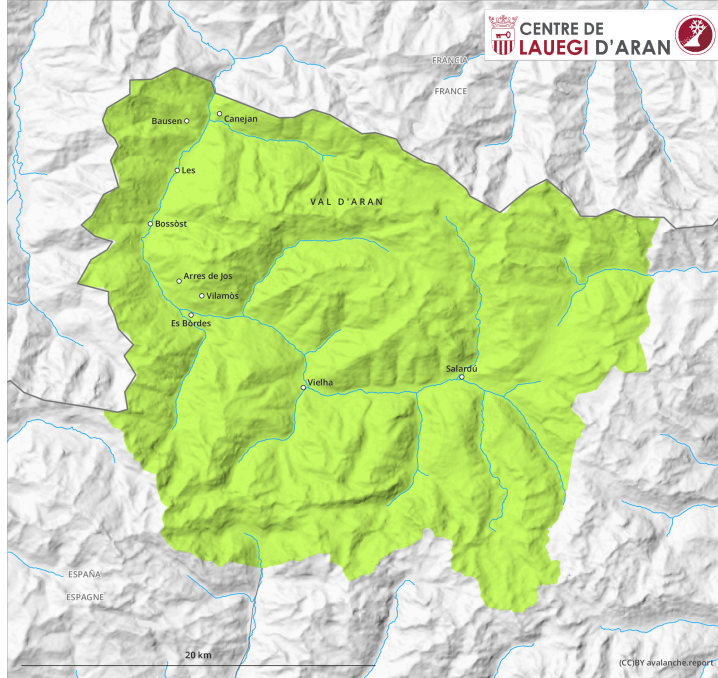
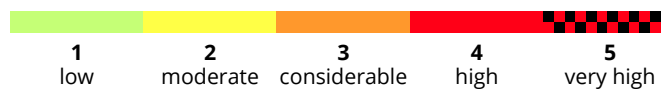
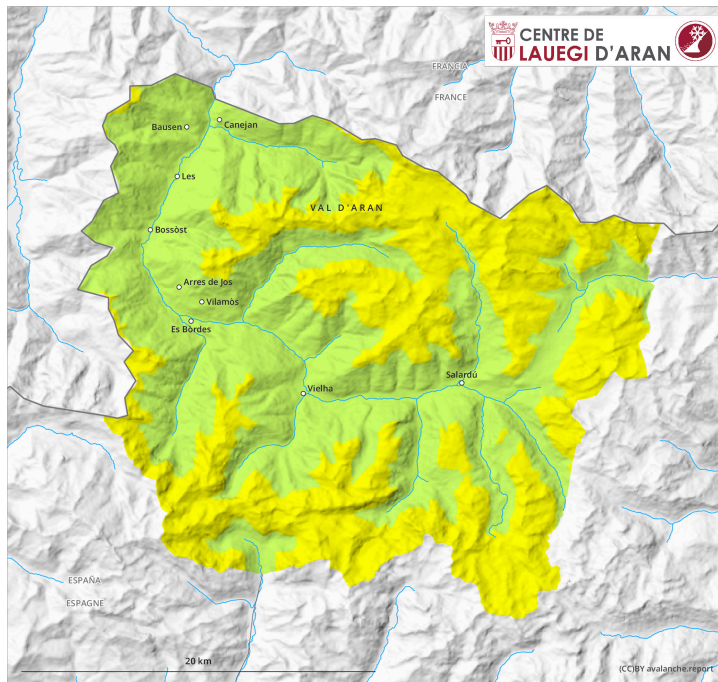


AM



PM



Danger Level 2 - Moderate

AM:



Tendency: Constant avalanche danger →
on Friday 17 03 2023



Wet snow

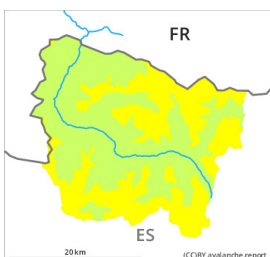


Snowpack stability: **fair**

Frequency: **few**

Avalanche size: **small**

PM:



Tendency: Constant avalanche danger →
on Friday 17 03 2023



Wet snow



Snowpack stability: **poor**

Frequency: **some**

Avalanche size: **small**

Moist snow slides as the day progresses in particular on very steep sunny slopes.

As a consequence of warming during the day and solar radiation more moist snow slides are possible as the day progresses, but they will be mostly small. The avalanche prone locations are to be found in particular on very steep sunny slopes above approximately 2300 m and on shady slopes below approximately 2300 m. Moist avalanches can to an increasing extent be released by people or triggered naturally.

The fresh wind slabs have bonded quite well with the old snowpack. They are unlikely to be released now. Even a small avalanche can sweep people along and give rise to falls. Backcountry tours and off-piste skiing should be started and concluded early. The current avalanche situation calls for meticulous route selection.

Snowpack

Thursday: The surface of the snowpack will freeze to form a strong crust and will soften during the day. Sunshine and high temperatures will give rise as the day progresses to increasing moistening of the snowpack in particular on very steep sunny slopes.

At intermediate and high altitudes there are 30 to 60 cm of snow, and even more in some localities. In all regions less snow than usual is lying. On steep sunny slopes at low and intermediate altitudes no snow is lying.

Tendency

Friday: Hardly any decrease in danger of moist avalanches until the temperature drops.