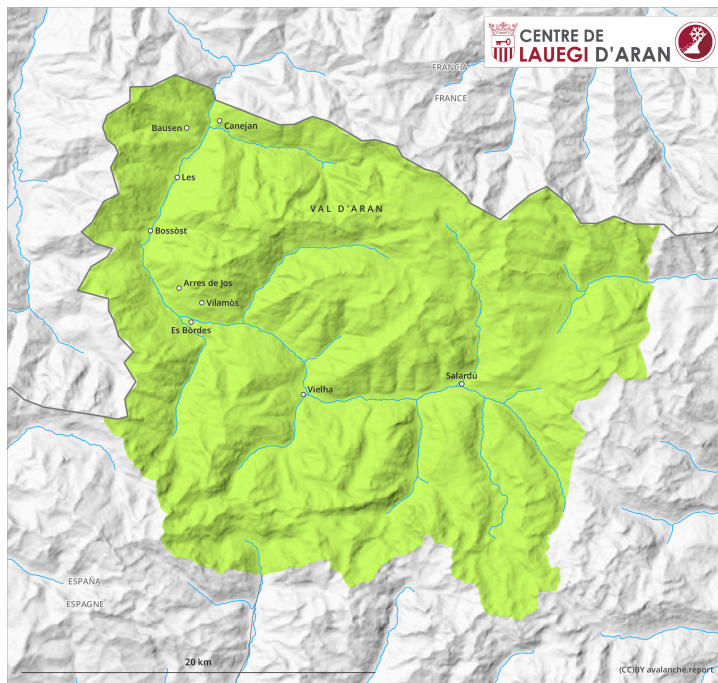
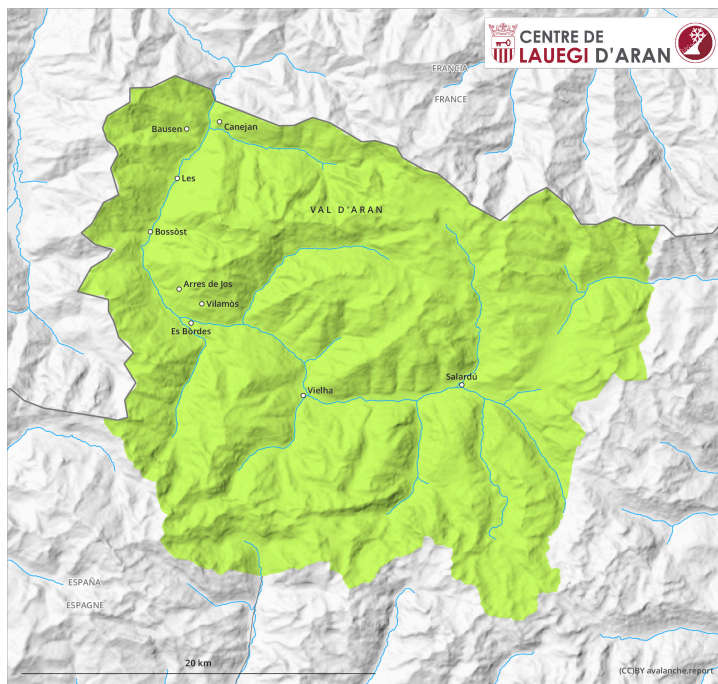


AM



PM



Danger Level 1 - Low

AM:



Tendency: Constant avalanche danger →

on Friday 07 04 2023



Wind slab



2200m

Snowpack stability: **fair**

Frequency: **few**

Avalanche size: **medium**

PM:



Tendency: Constant avalanche danger →

on Friday 07 04 2023



Wet snow



Snowpack stability: **poor**

Frequency: **few**

Avalanche size: **small**



Wind slab



2200m

Snowpack stability: **fair**

Frequency: **few**

Avalanche size: **medium**

Old wind slabs at high altitude. Moist snow slides during the day and gliding avalanches are possible.

The sometimes deep wind slabs of the weekend can be released in isolated cases in particular on very steep shady slopes and generally at elevated altitudes. In very isolated cases they are medium-sized and can mostly be released by large loads. The avalanche prone locations are to be found adjacent to ridgelines and in shady places that are protected from the wind.

As a consequence of warming during the day and solar radiation more moist snow slides are possible as the day progresses, but they will be mostly small. Individual gliding avalanches can also occur.

Backcountry touring and other off-piste activities call for meticulous route selection. Apart from the danger of being buried, restraint should be exercised in particular in view of the danger of avalanches sweeping people along and giving rise to falls.

Snowpack

The snowpack will be in most cases stable. The fresh snow of the weekend and in particular the wind slabs have bonded well with the old snowpack in all aspects. Sunshine and high temperatures will give rise on Thursday to increasing moistening of the snowpack in particular on very steep sunny slopes.

On shady slopes at intermediate and high altitudes there are 20 to 60 cm of snow, and even more in some localities. At elevated altitudes snow depths vary greatly, depending on the influence of the wind. At low

altitude from a snow sport perspective, in most cases insufficient snow is lying.

Tendency

Friday: Further decrease in danger of dry avalanches on wind-loaded slopes. The danger of moist slab avalanches will persist.