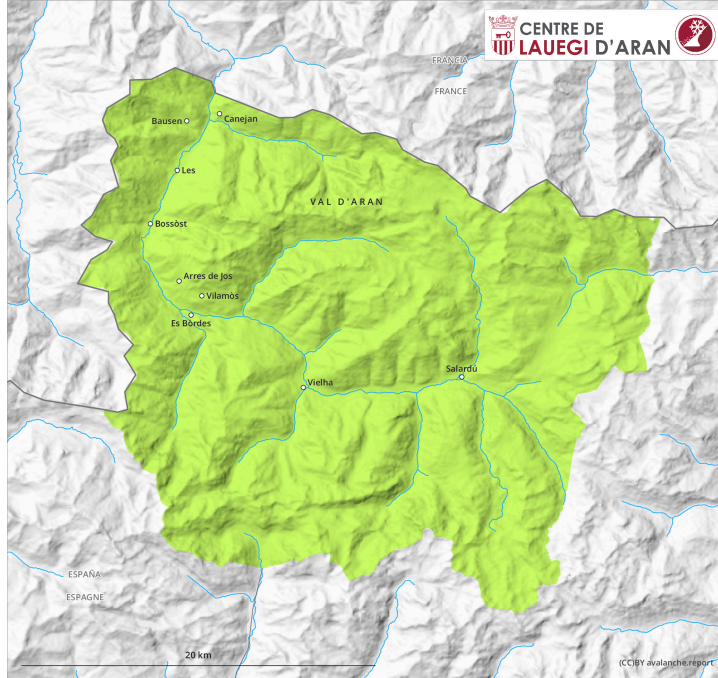
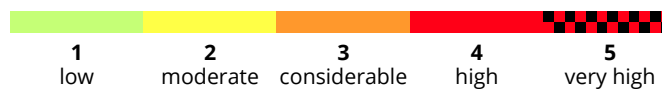
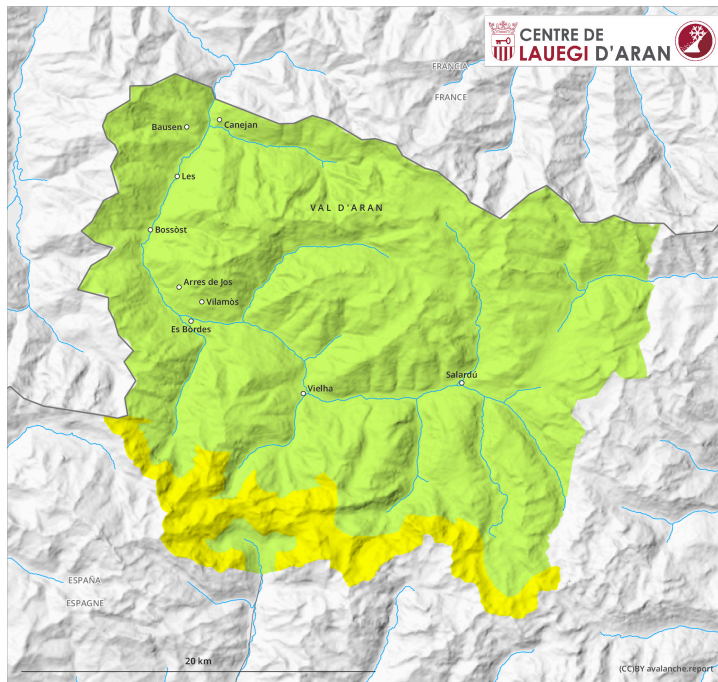


AM



PM



Danger Level 2 - Moderate

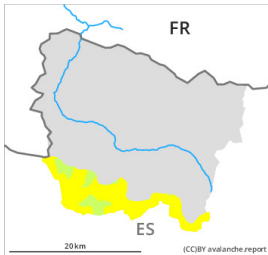
AM:



Tendency: Increasing avalanche danger
on Saturday 10 02 2024



PM:



Tendency: Increasing avalanche danger
on Saturday 10 02 2024



Wind slab



Snowpack stability: **very poor**

Frequency: **some**

Avalanche size: **small**

Evening and night: Fresh wind slabs require caution.

In the course of the day mostly small wind slabs will form in gullies and bowls and behind abrupt changes in the terrain as well as at high altitude. They can be released easily, or in isolated cases naturally. The wind slabs are to be bypassed in steep terrain.

Apart from the danger of being buried, restraint should be exercised in view of the danger of avalanches sweeping people along and giving rise to falls.

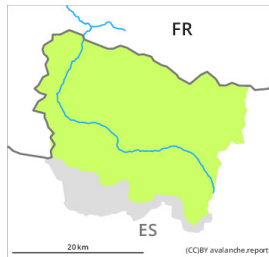
Snowpack

5 to 10 cm of snow will fall until late in the night above approximately 2000 m. In the next few hours the wind will be moderate for a temporary period. The wind slabs will be deposited on the unfavourable surface of an old snowpack in particular on shady slopes.

Tendency

Saturday: Down to 1200 m snow will fall over a wide area. For this reason the danger of dry avalanches will increase during the day.

Danger Level 1 - Low



Tendency: Increasing avalanche danger

on Saturday 10 02 2024



Wind slab



2000m

Snowpack stability: **poor**

Frequency: **few**

Avalanche size: **small**

Fresh wind slabs require caution.

In the afternoon small wind slabs will form in the vicinity of peaks. They can be released by a single winter sport participant in some cases.

Apart from the danger of being buried, restraint should be exercised in particular in view of the danger of avalanches sweeping people along and giving rise to falls.

Snowpack

0 to 5 cm of snow will fall until the evening above approximately 2200 m. In the next few hours the wind will be moderate for a temporary period. The small wind slabs will be deposited on the unfavourable surface of an old snowpack in particular on shady slopes.

Tendency

Saturday: Down to 1200 m snow will fall over a wide area. For this reason the danger of dry avalanches will increase during the day to level 3 (considerable).