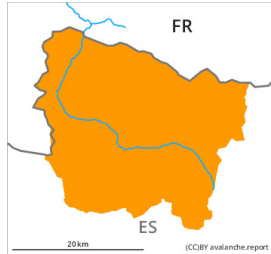


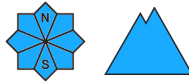
Danger Level 3 - Considerable



Tendency: Constant avalanche danger →
on Sunday 10 03 2024



Wind slab



Snowpack stability: **very poor**

Frequency: **some**

Avalanche size: **large**



New snow



Snowpack stability: **very poor**

Frequency: **some**

Avalanche size: **medium**

1500m

Fresh snow and large quantities of wind-drifted snow represent the main danger.

The fresh snow and in particular the many sometimes large wind slabs can be released easily or naturally in all aspects and in all altitude zones. The avalanche prone locations are quite prevalent and are barely recognisable because of the poor visibility. At the border to Ribagorça and Pallars and near the border with Benasque the avalanche prone locations are widespread. The avalanche danger in these regions is within the upper range of danger level 3 (considerable).

The conditions are dangerous for backcountry touring and other off-piste activities.

Snowpack

10 to 20 cm of snow fell on Friday above approximately 1500 m. 20 to 40 cm of snow, and even more in some localities, will fall on Saturday. The wind will be moderate to strong over a wide area. The southerly wind will transport the new snow significantly.

The fresh wind slabs are lying on weak layers on shady slopes at intermediate and high altitudes. Above approximately 2000 m there are 90 to 120 cm of snow, and even more in some localities.

Tendency

Sunday: Some snow will fall in some regions. The avalanche danger will not decrease for the time being.