

## Danger Level 2 - Moderate

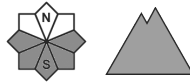


**Tendency: Decreasing avalanche danger**

on Wednesday 18 December 2024



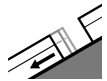
Wet snow



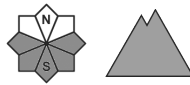
Snowpack stability: **very poor**

Frequency: **some**

Avalanche size: **small**



Gliding snow

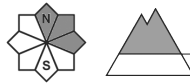


Frequency: **some**

Avalanche size: **medium**



Wind slab



**Treeline**

Snowpack stability: **poor**

Frequency: **some**

Avalanche size: **small**

### Wet and gliding snow represent the main danger.

As a consequence of warming during the day and solar radiation numerous small and, in isolated cases, medium-sized moist avalanches are to be expected. The avalanche prone locations are to be found in particular on very steep sunny slopes in all altitude zones.

Very steep grassy slopes: Gliding avalanches are likely to occur. Sometimes Explanation: "these" may only stand for "these avalanches" are medium-sized.

The more recent wind slabs of last week can be released by a single winter sport participant on shady slopes and generally at high altitudes and in high Alpine regions. The avalanches are rather small.

Backcountry touring and other off-piste activities call for experience in the assessment of avalanche danger.

### Snowpack

East, south and west facing slopes: The surface of the snowpack will freeze very little and will already soften in the late morning. Sunshine and high temperatures will give rise as the day progresses to increasing moistening of the snowpack especially on very steep sunny slopes.

Shady slopes: The upper section of the snowpack is dry.

Above the tree line there are 50 to 80 cm of snow. In particular at high altitude snow depths vary greatly, depending on the influence of the wind.

### Tendency

Wednesday: The danger of wet and gliding avalanches will decrease gradually.