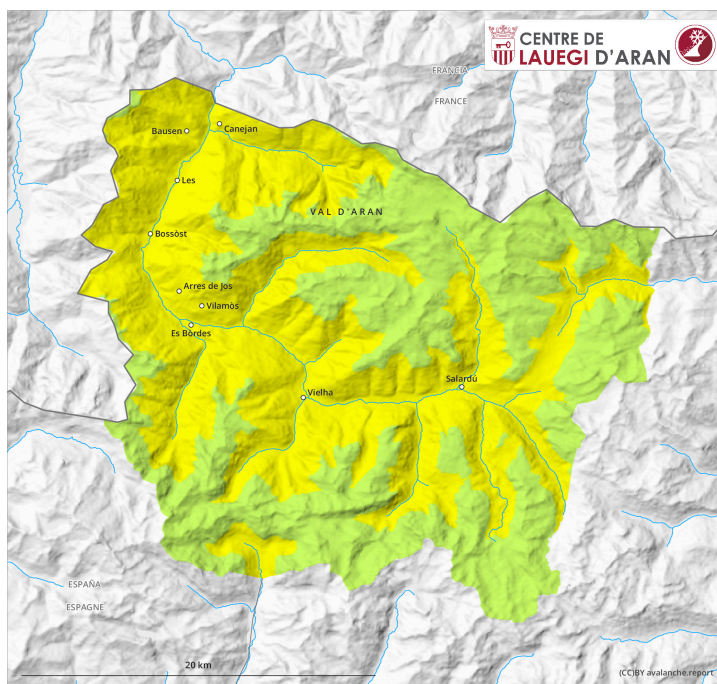


earlier



later



Danger Level 2 - Moderate

earlier



Tendency: Increasing avalanche danger
on Friday 7 February 2025



Persistent weak layer



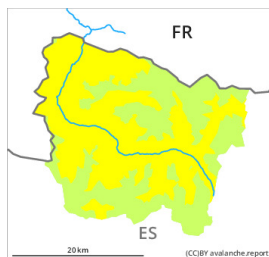
Treeline

Snowpack stability: **fair**

Frequency: **few**

Avalanche size: **medium**

later



Treeline

Tendency: Increasing avalanche danger
on Friday 7 February 2025



Persistent weak layer



Treeline

Snowpack stability: **fair**

Frequency: **few**

Avalanche size: **medium**



Wet snow



1500m

Snowpack stability: **poor**

Frequency: **some**

Avalanche size: **small**

Weak layers in the upper part of the snowpack necessitate caution. The danger of moist avalanches will increase during the day.

Until the early morning a generally favourable avalanche situation will prevail. Weak layers in the old snowpack can still be released in isolated cases in particular on little-used, rather lightly snow-covered north and east facing slopes. In isolated cases the avalanches in these locations are medium-sized and in isolated cases easily released. The avalanche prone locations are to be found especially adjacent to ridgelines and in gullies and bowls and in the vicinity of peaks. In particular extremely steep shady slopes in places that are protected from the wind: In addition an appreciable danger of dry snow slides exists. These are rather small but in some cases easily released.

Steep sunny slopes: As the day progresses small and, in isolated cases, medium-sized moist snow slides and avalanches are possible. They can to an increasing extent be released easily or triggered naturally.

Backcountry touring and other off-piste activities call for careful route selection. Apart from the danger of being buried, restraint should be exercised in view of the danger of avalanches sweeping people along and giving rise to falls.

Snowpack

Shady slopes: The upper section of the snowpack is faceted and weak and its surface consists of surface hoar. Towards its base, the snowpack is well consolidated.

Sunny slopes: As a consequence of falling temperatures a crust will form on the surface during the night. Sunshine and high temperatures will give rise as the day progresses to increasing moistening of the snowpack in particular on steep slopes.

Above the tree line snow depths vary greatly, depending on the influence of the wind. In all regions less snow than usual is lying.

Tendency

On Friday it will be cloudy. The wind will be moderate adjacent to ridgelines in some regions. The danger of moist avalanches will decrease. The danger of dry avalanches will increase a little during the day.