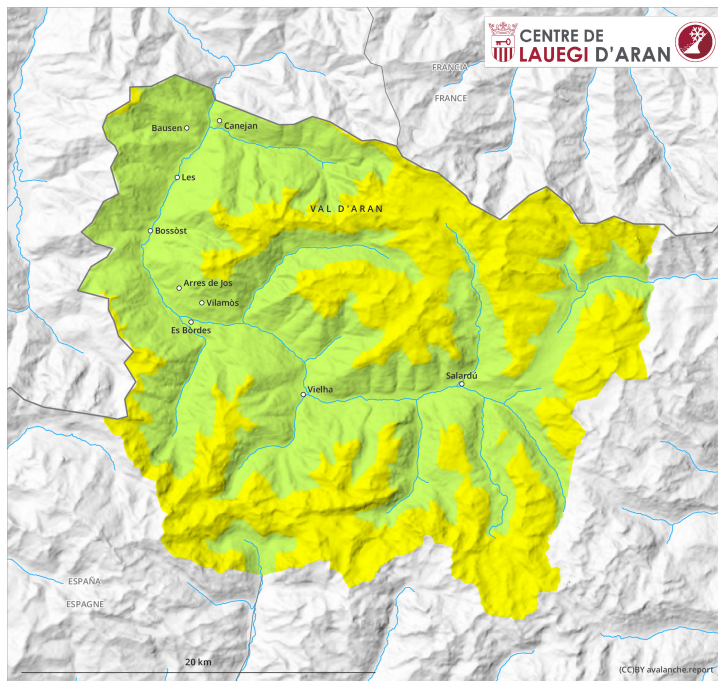
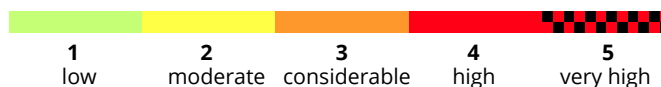
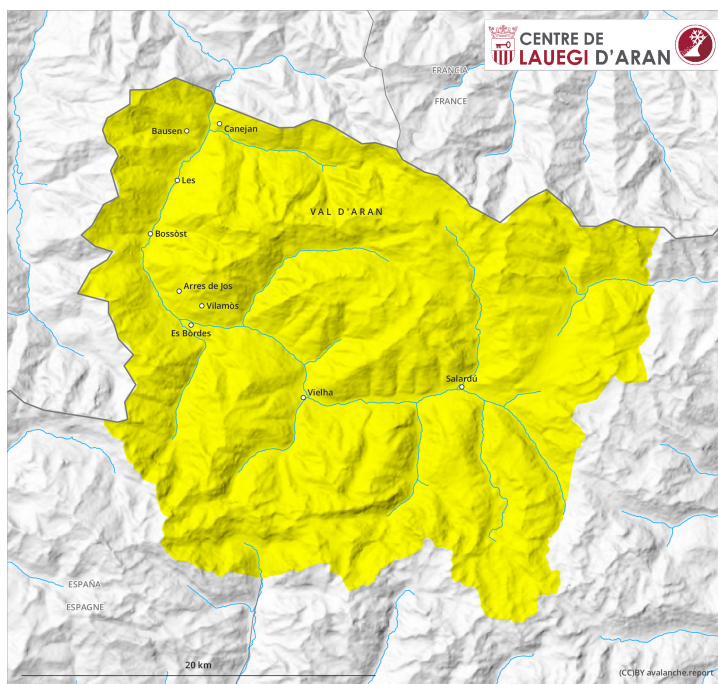




earlier

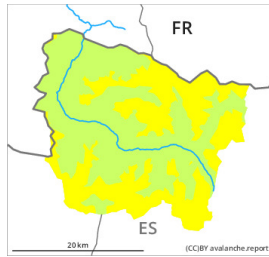


later



Danger Level 2 - Moderate

earlier



Treeline

Tendency: Constant avalanche danger on Thursday 16 April 2026 →



Wind slab



Treeline

Snowpack stability: poor

Frequency: some

Avalanche size: small

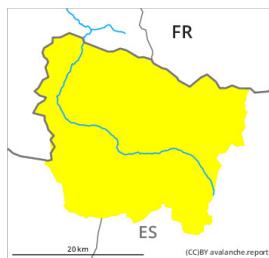


Wet snow



1500m

later



Tendency: Constant avalanche danger on Thursday 16 April 2026 →



Wind slab



Treeline

Snowpack stability: poor

Frequency: some

Avalanche size: small



Wet snow



1500m

Moist snow slides and avalanches as the day progresses. Wind slabs at elevated altitudes.

Southern and eastern borders of Aran, Shady slopes and high altitudes: The wind slabs are easy to recognise and prone to triggering. They are to be found in particular adjacent to ridgelines and in pass areas. The dry avalanches are rather small. Individual medium-sized avalanches are further not ruled out.

Steep sunny slopes as well as low and intermediate altitudes: As a consequence of warming during the day and solar radiation moist snow slides and avalanches are to be expected as the day progresses. In addition a latent danger of gliding avalanches exists.

Backcountry touring calls for meticulous route selection.

Snowpack

Tuesday: 2 to 5 cm of snow, and even more in some localities, has fallen above approximately 1500 m. Southern and eastern borders of Aran, The northerly wind has transported the new snow.



Wednesday: The weather will be mostly sunny. The surface of the snowpack will freeze to form a strong crust and will soften during the day.

At intermediate and high altitudes there is still a very large amount of snow. At high altitude snow depths vary greatly, depending on the influence of the wind.

Tendency

Thursday: The conditions remain spring-like.