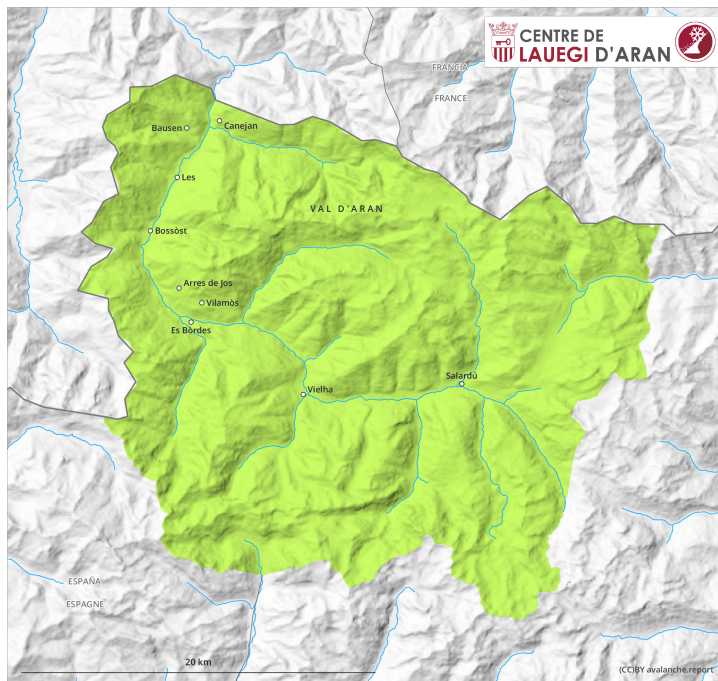
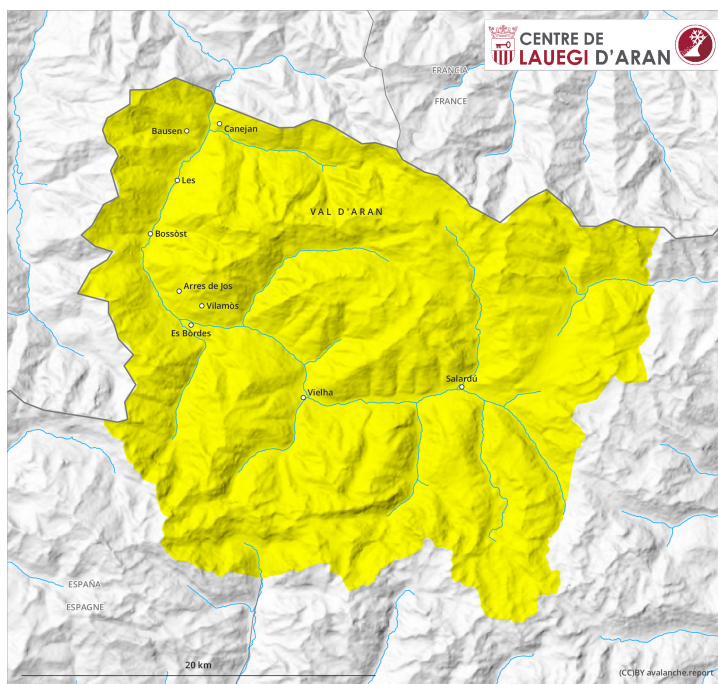




earlier



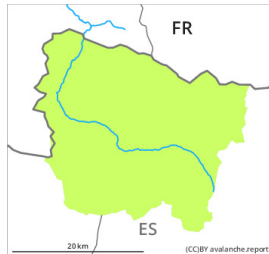
later





Danger Level 2 - Moderate

earlier



Tendency: Constant avalanche danger
on Saturday 18 April 2026



Wet snow



Wind slab

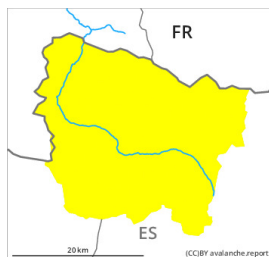


Snowpack stability: **poor**

Frequency: **few**

Avalanche size: **small**

later



Tendency: Constant avalanche danger
on Saturday 18 April 2026



Wet snow



Wind slab



Snowpack stability: **poor**

Frequency: **few**

Avalanche size: **small**

Moist snow slides and avalanches as the day progresses.

Sunny slopes as well as low and intermediate altitudes: As a consequence of warming during the day and solar radiation moist snow slides and avalanches are possible as the day progresses, even medium-sized ones. In addition a latent danger of gliding avalanches exists.

Very steep shady slopes, above approximately 2700 m: The wind slabs can be released in isolated cases.

Backcountry tours should be started and concluded early.

Snowpack

Friday: The weather will be mostly sunny. The surface of the snowpack will freeze to form a strong crust and will soften during the day.

Sunny slopes and low and intermediate altitudes: The snowpack will be generally wet all the way through.

At intermediate and high altitudes there is still a very large amount of snow. At high altitude snow depths vary greatly, depending on the influence of the wind.



Tendency

Saturday: Slight increase in danger of moist avalanches.